



Matton Shipyard

Preservation and Adaptive Reuse Initiative Site
Assessment, Planning and Feasibility Study

Public Informational Meeting, May 11th, 2017

Team Introductions

Fisher Associates

Bill Price, RLA

Sarah Hogan, RLA

Adirondack Studios

Seth Harkins

Bero Architecture

Ryan Biggs Clark Davis

MJ Engineering

Hartgen Archeological Assoc.

Popli Design Group



Matton Shipyard

Preservation & Adaptive Reuse Initiative Site Assessment, Planning & Feasibility Study



Project Status To Date...

- Inventory & Analysis Phase..... Complete
- Stakeholder Interviews..... Complete
- Public Meeting #1..... Complete
- Program Development &
Concept Design Alternatives.....Current
- Consultation with Indian
Nations & Tribes Current
- Public Meeting #2 Current
- Implementation Strategies May / June 2017
- Final Masterplan July / August 2017

Program Development

- Public Access to Water
- Preserve & Enhance Wildlife Habitat
- Opportunities to Integrate Day Peckinpaugh
- Building Preservation
- Respect Native American History



Boat Building Operation



Matton Shipyard

Preservation & Adaptive Reuse Initiative Site Assessment, Planning & Feasibility Study



Local Trade Workshops / Education



Matton Shipyard

Preservation & Adaptive Reuse Initiative Site Assessment, Planning & Feasibility Study



Bicycle Rental & Repair Shop



Matton Shipyard

Preservation & Adaptive Reuse Initiative Site Assessment, Planning & Feasibility Study



Habitat / Open Space Preservation



Matton Shipyard

Preservation & Adaptive Reuse Initiative Site Assessment, Planning & Feasibility Study



Canoe / Kayak Rental and Storage



Matton Shipyard

Preservation & Adaptive Reuse Initiative Site Assessment, Planning & Feasibility Study



Waterfront Access



Matton Shipyard

Preservation & Adaptive Reuse Initiative Site Assessment, Planning & Feasibility Study



Marina / Transient Docks



Matton Shipyard

Preservation & Adaptive Reuse Initiative Site Assessment, Planning & Feasibility Study



Day Peckinpaugh



Matton Shipyard

Preservation & Adaptive Reuse Initiative Site Assessment, Planning & Feasibility Study



Docking Historic Matton Vessels



Matton Shipyard

Preservation & Adaptive Reuse Initiative Site Assessment, Planning & Feasibility Study



Pavilion Structures



Matton Shipyard

Preservation & Adaptive Reuse Initiative Site Assessment, Planning & Feasibility Study



Restrooms & Shower / Locker Facilities



Matton Shipyard

Preservation & Adaptive Reuse Initiative Site Assessment, Planning & Feasibility Study



Sculpture / Play

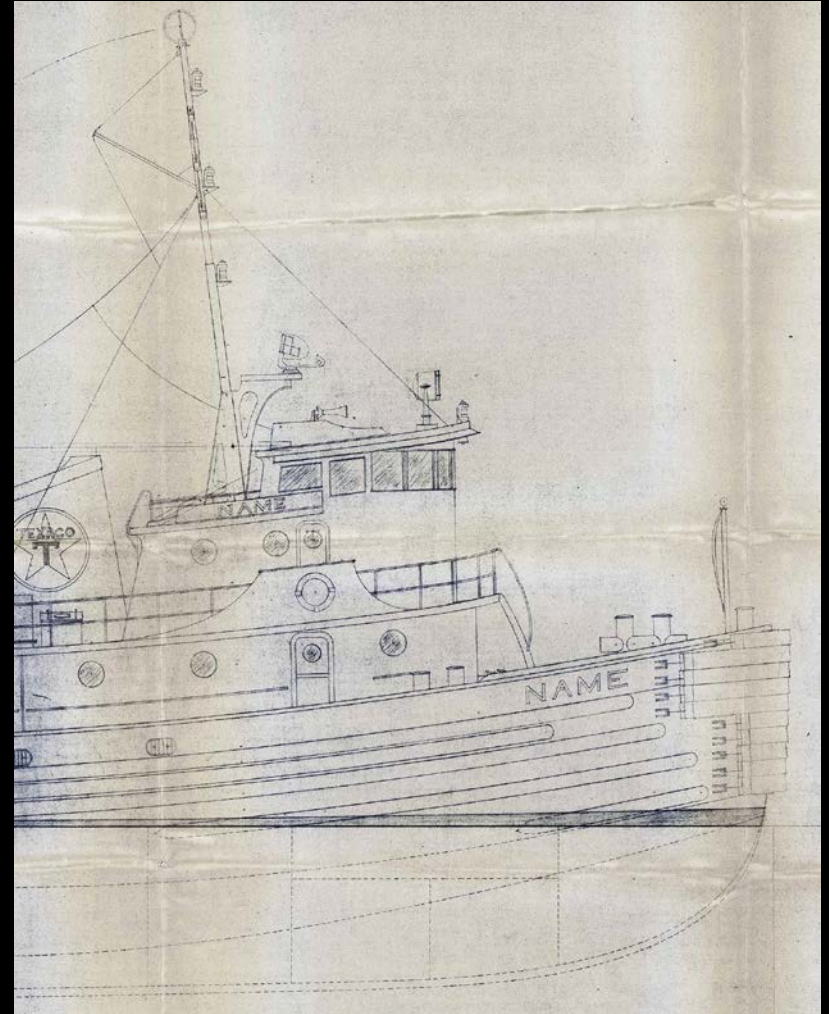


Matton Shipyard

Preservation & Adaptive Reuse Initiative Site Assessment, Planning & Feasibility Study



Visitor / Welcome Center



Matton Shipyard

Preservation & Adaptive Reuse Initiative Site Assessment, Planning & Feasibility Study



Supporting Services

- Parking Area
- Food & Beverage
- Seating
- Refuse Collection
- Lighting
- Restrooms
- Wi-Fi



Matton Shipyard

Preservation & Adaptive Reuse Initiative Site Assessment, Planning & Feasibility Study



Contributing Structures

- Flag Pole
- Steel Slipways
- Hoppers
- Camels

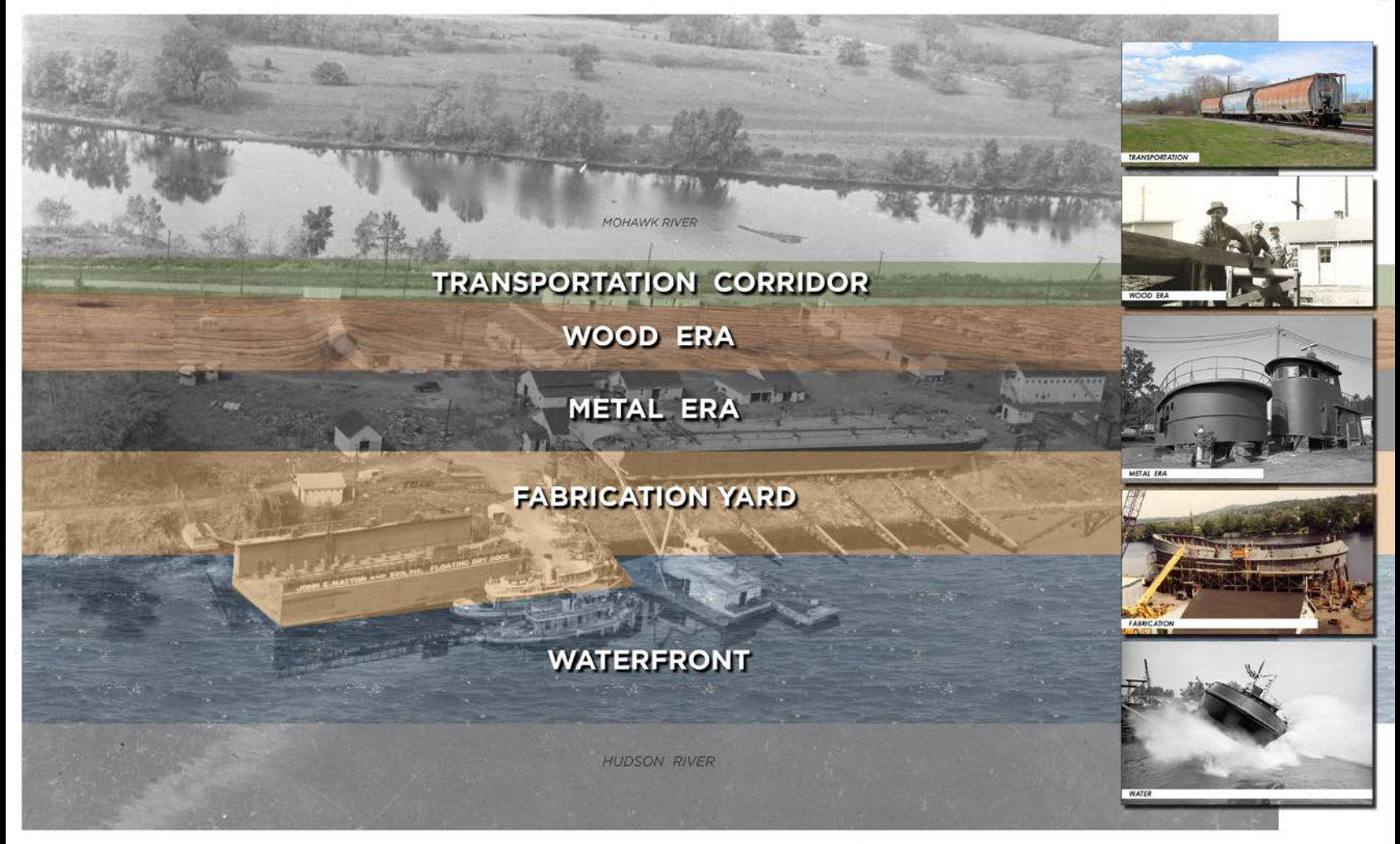


Matton Shipyard

Preservation & Adaptive Reuse Initiative Site Assessment, Planning & Feasibility Study



Conceptual Diagram



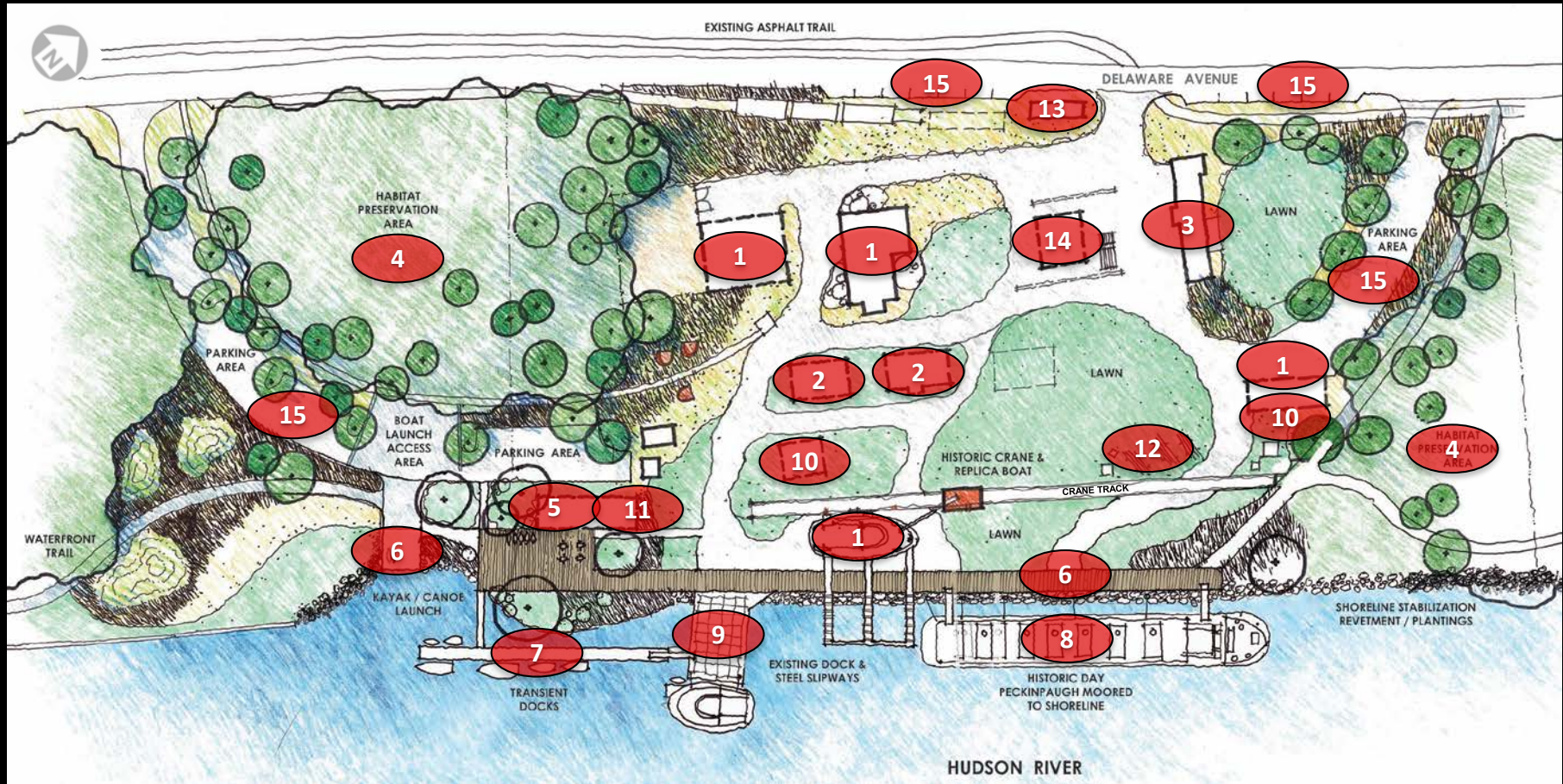
Matton Shipyard

Preservation & Adaptive Reuse Initiative Site Assessment, Planning & Feasibility Study



Concept A

- | | | |
|--------------------------------------|------------------------------------|------------------------------|
| 1. BOAT BUILDING OPERATION | 7. MARINA / TRANSIENT DOCK | 12. SCULPTURE & PLAY |
| 2. LOCAL TRADE WORKSHOPS / EDUCATION | 8. DAY PECKINPAUGH | 13. VISITOR / WELCOME CENTER |
| 3. BICYCLE RENTAL & REPAIR SHOP | 9. DOCKING HISTORIC MATTON VESSELS | 14. FOOD & BEVERAGE |
| 4. HABITAT / OPEN SPACE PRESERVATION | 10. PAVILIONS | 15. PARKING AREAS |
| 5. CANOE/KAYAK RENTAL & STORAGE | 11. RESTROOM/SHOWERS | |
| 6. WATERRONT ACCESS | | |



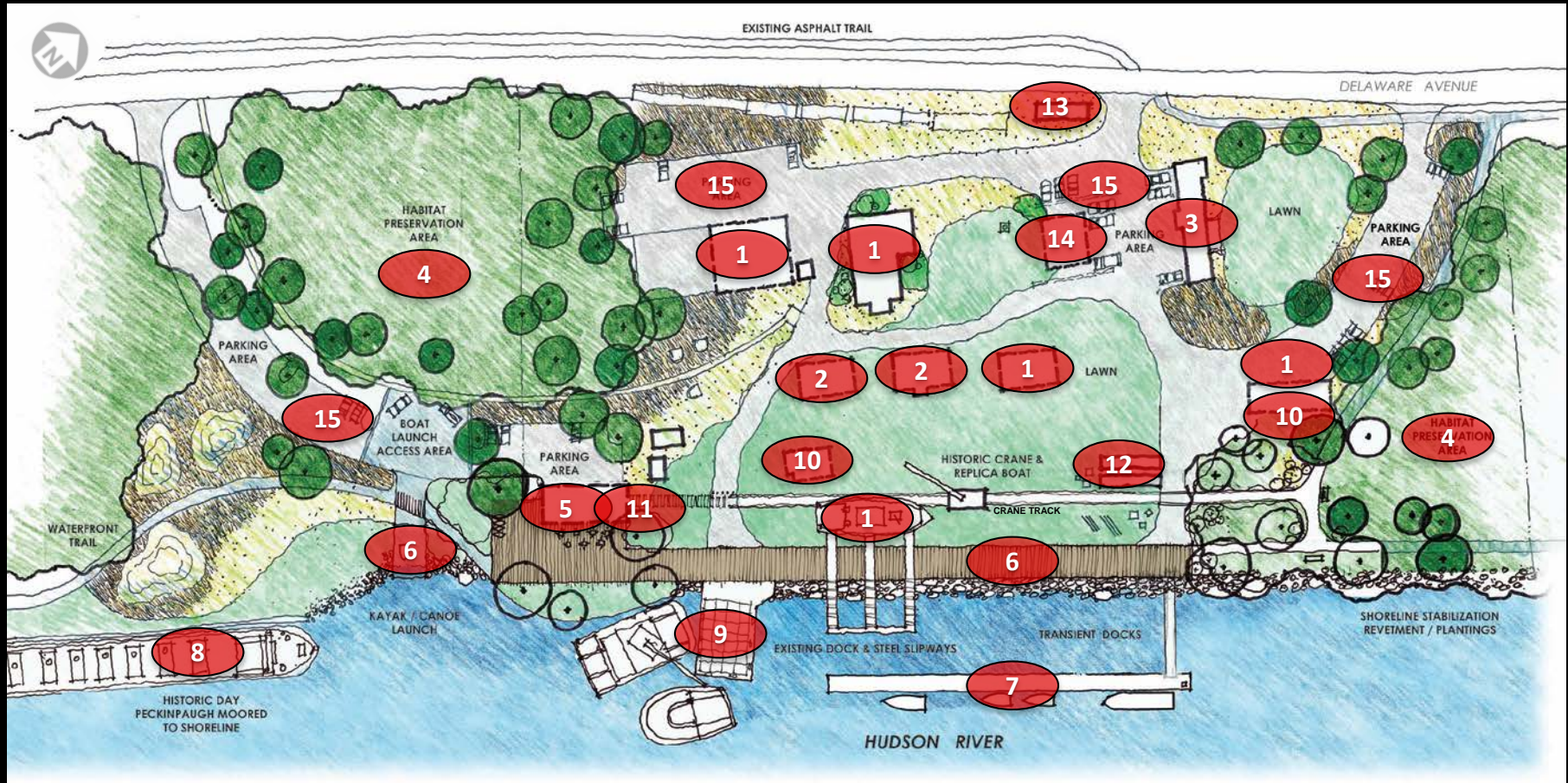
Matton Shipyard

Preservation & Adaptive Reuse Initiative Site Assessment, Planning & Feasibility Study



Concept B

- | | | |
|--------------------------------------|------------------------------------|------------------------------|
| 1. BOAT BUILDING OPERATION | 7. MARINA / TRANSIENT DOCK | 12. SCULPTURE & PLAY |
| 2. LOCAL TRADE WORKSHOPS / EDUCATION | 8. DAY PECKINPAUGH | 13. VISITOR / WELCOME CENTER |
| 3. BICYCLE RENTAL & REPAIR SHOP | 9. DOCKING HISTORIC MATTON VESSELS | 14. FOOD & BEVERAGE |
| 4. HABITAT / OPEN SPACE PRESERVATION | 10. PAVILIONS | 15. PARKING AREAS |
| 5. CANOE/KAYAK RENTAL & STORAGE | 11. RESTROOM/SHOWERS | |
| 6. WATERRONT ACCESS | | |

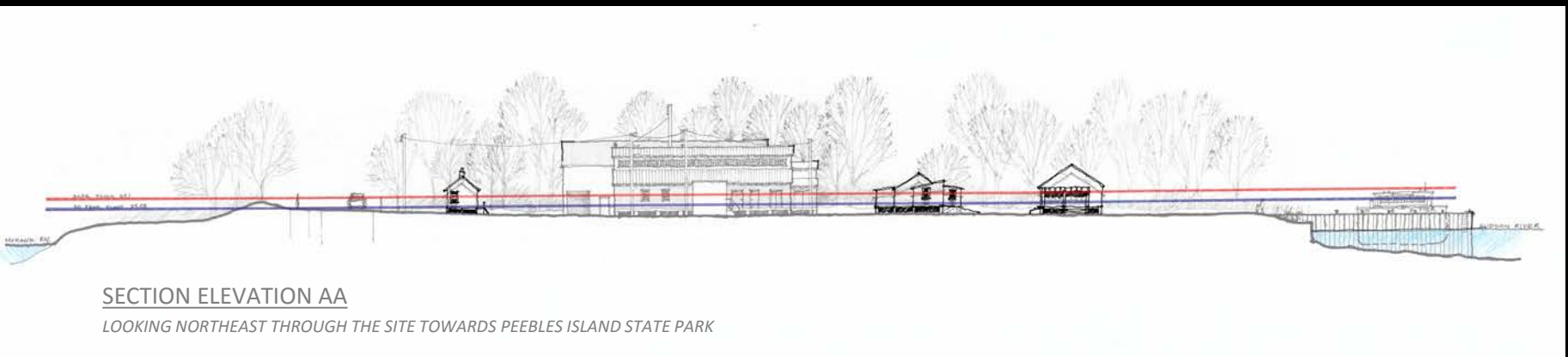


Matton Shipyard

Preservation & Adaptive Reuse Initiative Site Assessment, Planning & Feasibility Study



Site Section Elevation

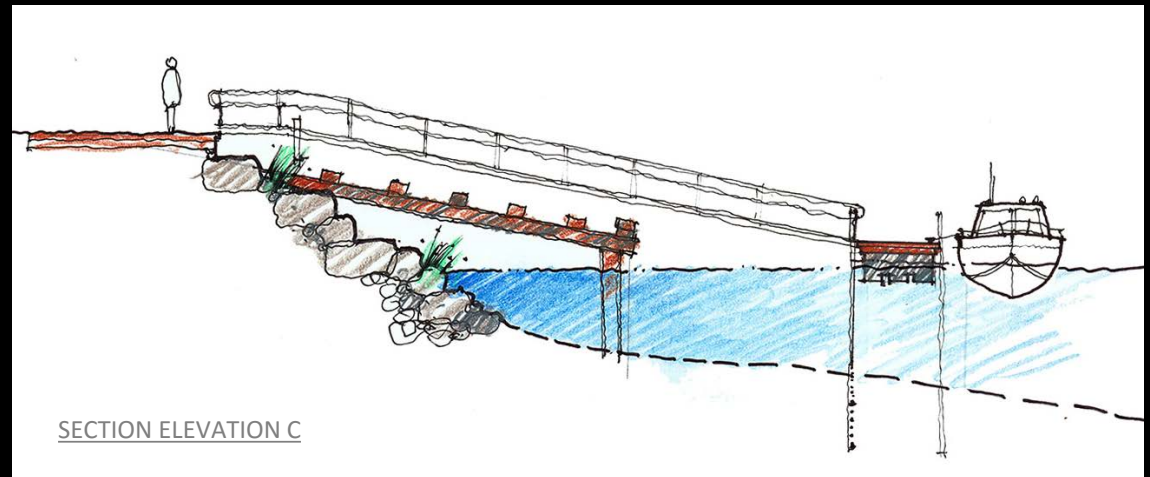
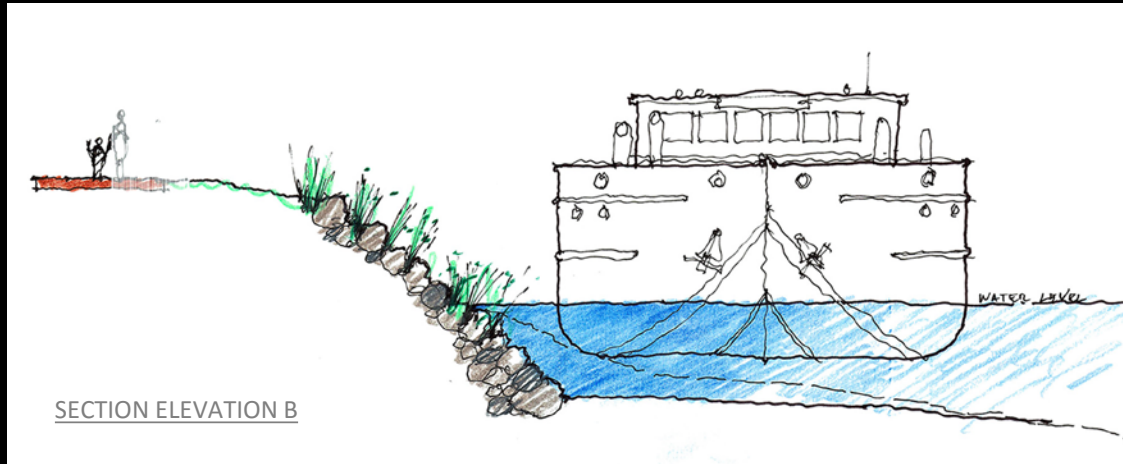


Matton Shipyard

Preservation & Adaptive Reuse Initiative Site Assessment, Planning & Feasibility Study



Shoreline Stabilization Treatment



Matton Shipyard

Preservation & Adaptive Reuse Initiative Site Assessment, Planning & Feasibility Study

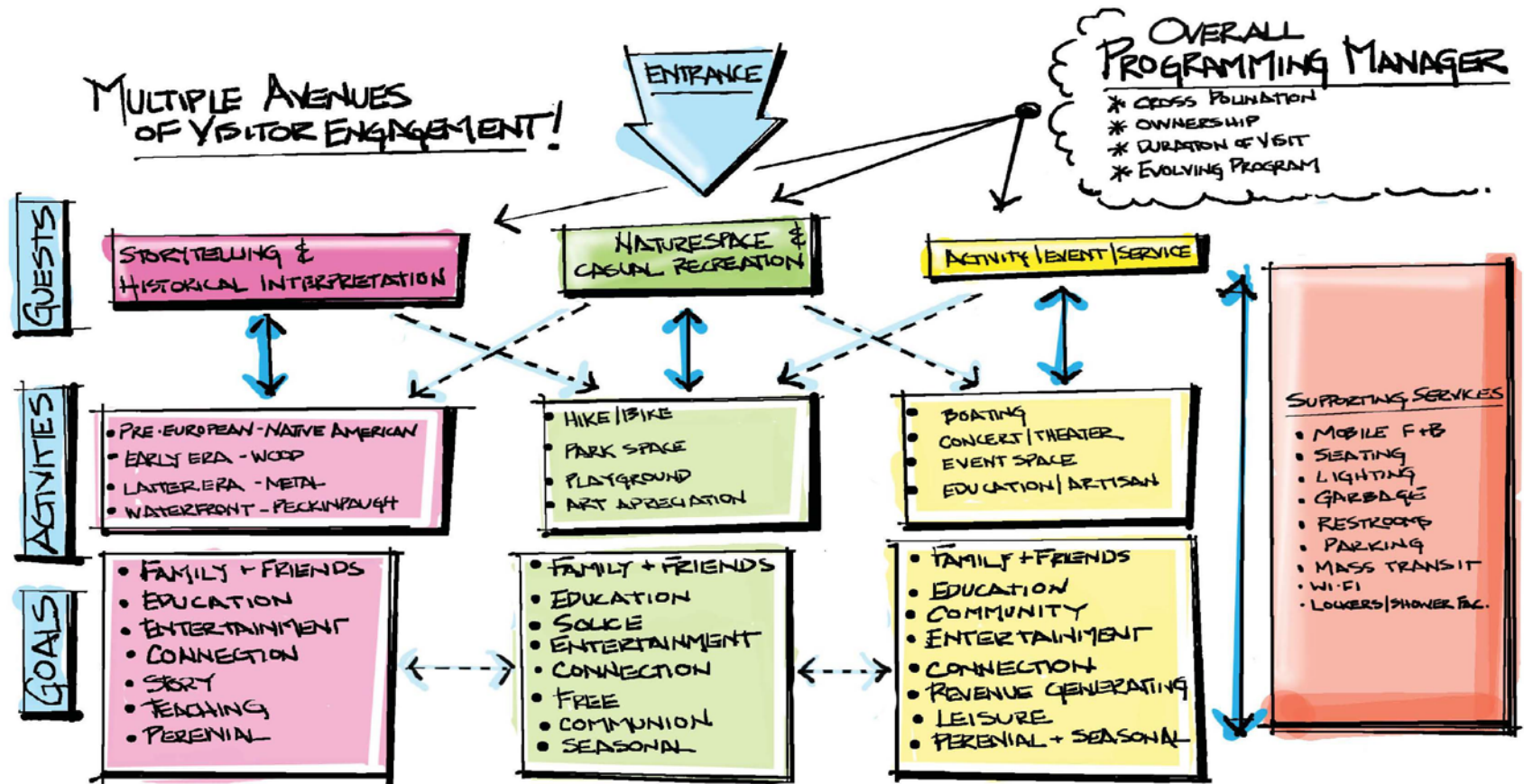


Consultation - Indian Nations & Tribes

- Section 106 Review – National Historic Preservation Act of 1966
- Consultation with Indian Nations and Tribes – May 2017
 - Stockbridge-Munsee Community, Band of Mohican Indians
 - Delaware Tribe of Indians
 - Delaware Nation
 - St. Regis Mohawk Tribe

Telling the Matton Story...

Campus Programming Outline



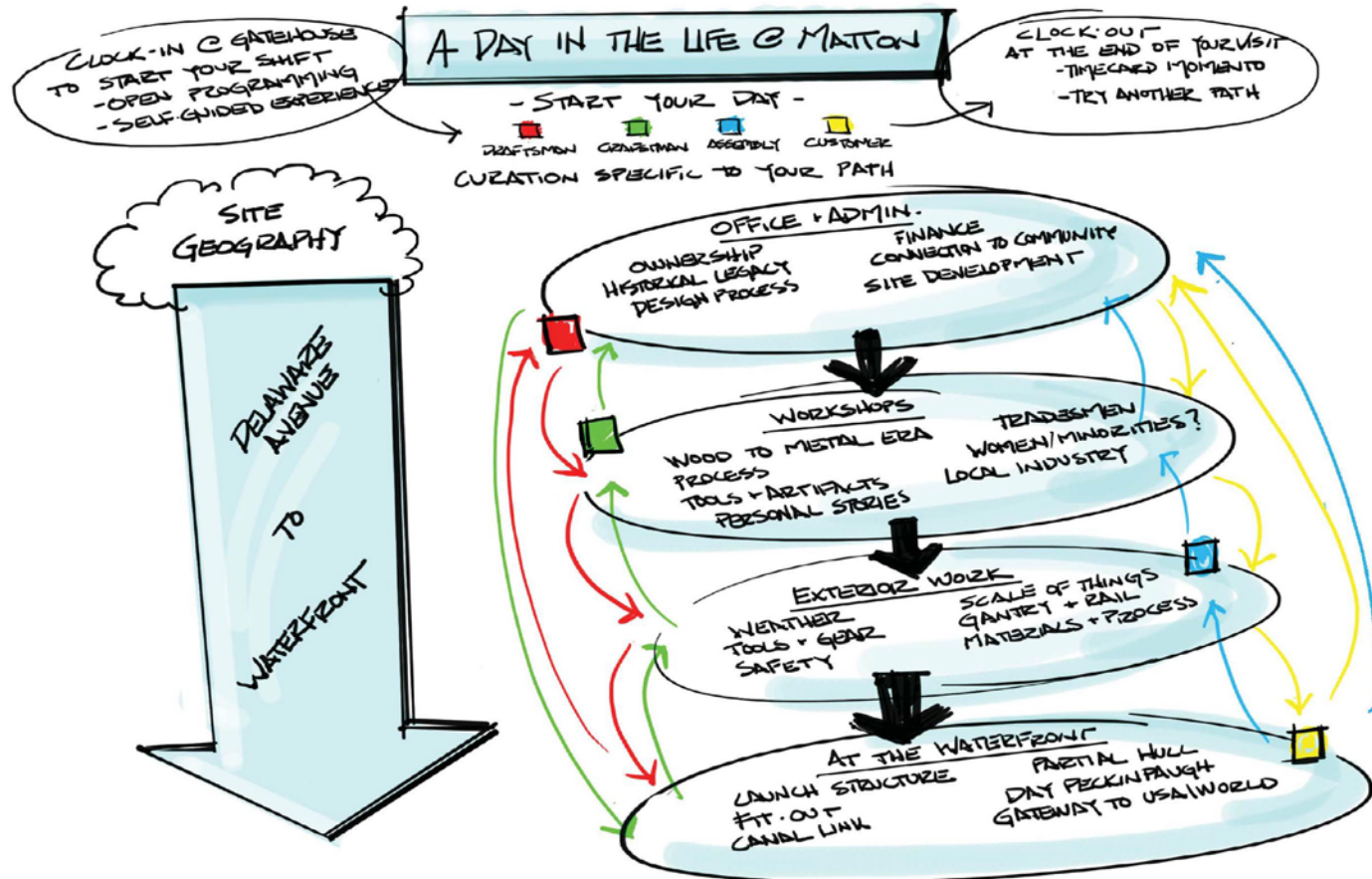
Matton Shipyard

Preservation & Adaptive Reuse Initiative Site Assessment, Planning & Feasibility Study



Telling the Matton Story...

Historical Interpretation Programming Detail



Matton Shipyard

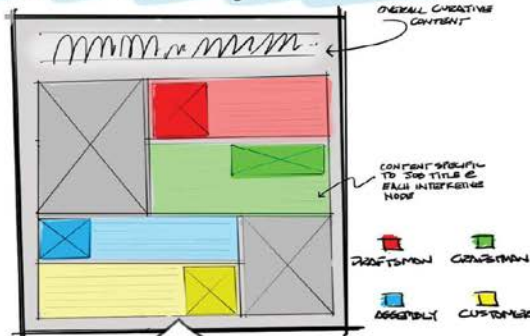
Preservation & Adaptive Reuse Initiative Site Assessment, Planning & Feasibility Study



Telling the Matton Story...

Interpretive Exhibitory & Iconography Outline

INTERPRETIVE GRAPHICS



BLEND OF
STATIC + DYNAMIC
CONTENT

IMMERSIVE EXHIBIT CONTENT

- LIVING HISTORY → HISTORICAL DOCUMENTS
→ FORMER EMPLOYEES
- AUDIO STORYBANK → PERSONAL EXPERIENCE
- AUDIO/VISUAL SUPPORT → VIDEO CONTENT
• AMBIENT AUDIO → SOUNDS OF A WORKING SITE
• LARGE-SCALE PROJECTION
- QR CODES + DIGITAL MEDIA
→ UPDATED / EVOLVING PROGRAMMING
- SCALE OF THINGS!
- VOCATIONAL SUPPORT OF HISTORICAL INTERPRETATION
→ TRADITIONAL PERIOD METHODS
→ HANDS ON / EXPERIENTIAL LEARNING

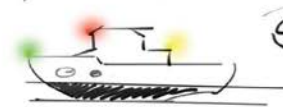
MATTON SHIPYARD SIGNATURE ICONOGRAPHY (BRAND!)



- VISUAL** SIGHTLINE & ROAD AND WATER VIEWS
 → LAYERED VISUAL (SKYLINE)
 → FOCAL POINTS, SIGNATURE ICONS
 → NAVAL COMMUNICATION FLAGS
 → NAVIGATION LIGHTS

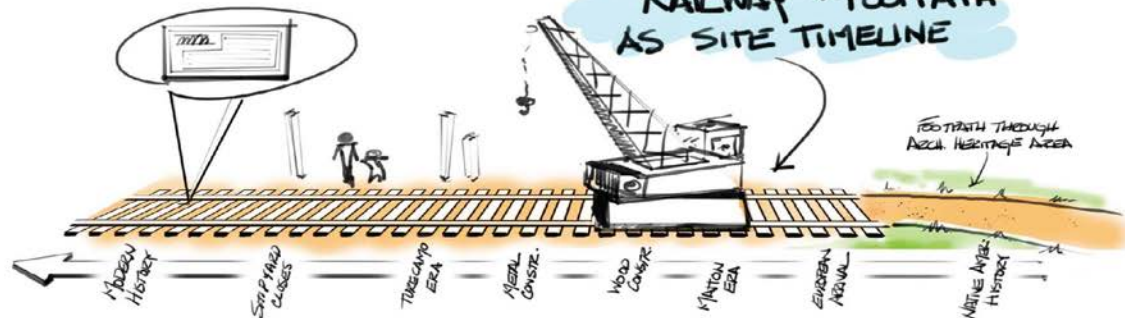


- RITUAL** EVENT BASED
 → FOGHORN, STARTING SHIFT
 → SHIPS BELL



- COMMUNAL** ENGAGE COMMUNITY IN DESIGN
 → CAMPUS ICONS
 → OWNERSHIP
 → "MEET ME AT THE..."

RAILWAY + FOOTPATH AS SITE TIMELINE



Matton Shipyard

Preservation & Adaptive Reuse Initiative Site Assessment, Planning & Feasibility Study



Telling the Matton Story...

Visual Branding



Campus Iconography



Matton Shipyard

Preservation & Adaptive Reuse Initiative Site Assessment, Planning & Feasibility Study



Project Next Steps

- Implementation Strategies
 - Flood Resiliency Measures
 - Utilities
 - Phasing
 - Estimates
 - Funding
 - Operations/Management
- Draft Masterplan Document
- Final Masterplan Document



Matton Shipyard

Preservation & Adaptive Reuse Initiative Site Assessment, Planning & Feasibility Study



DISCUSSION

