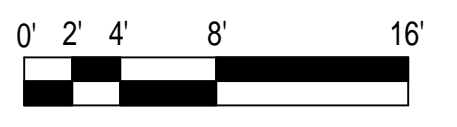


D1 OFFICE BUILDING - NORTH ELEVATION
1/4" = 1'-0"



A1 OFFICE BUILDING - SOUTH ELEVATION
1/4" = 1'-0"



Lacey Thaler Reilly Wilson
Architecture & Preservation, LLP
79 N. Pearl Street, Fourth Floor
Albany, NY 12207
518.375.1485
ltrw-arch.com

NOT FOR CONSTRUCTION

For Estimating Purposes Only

CONSULTANT

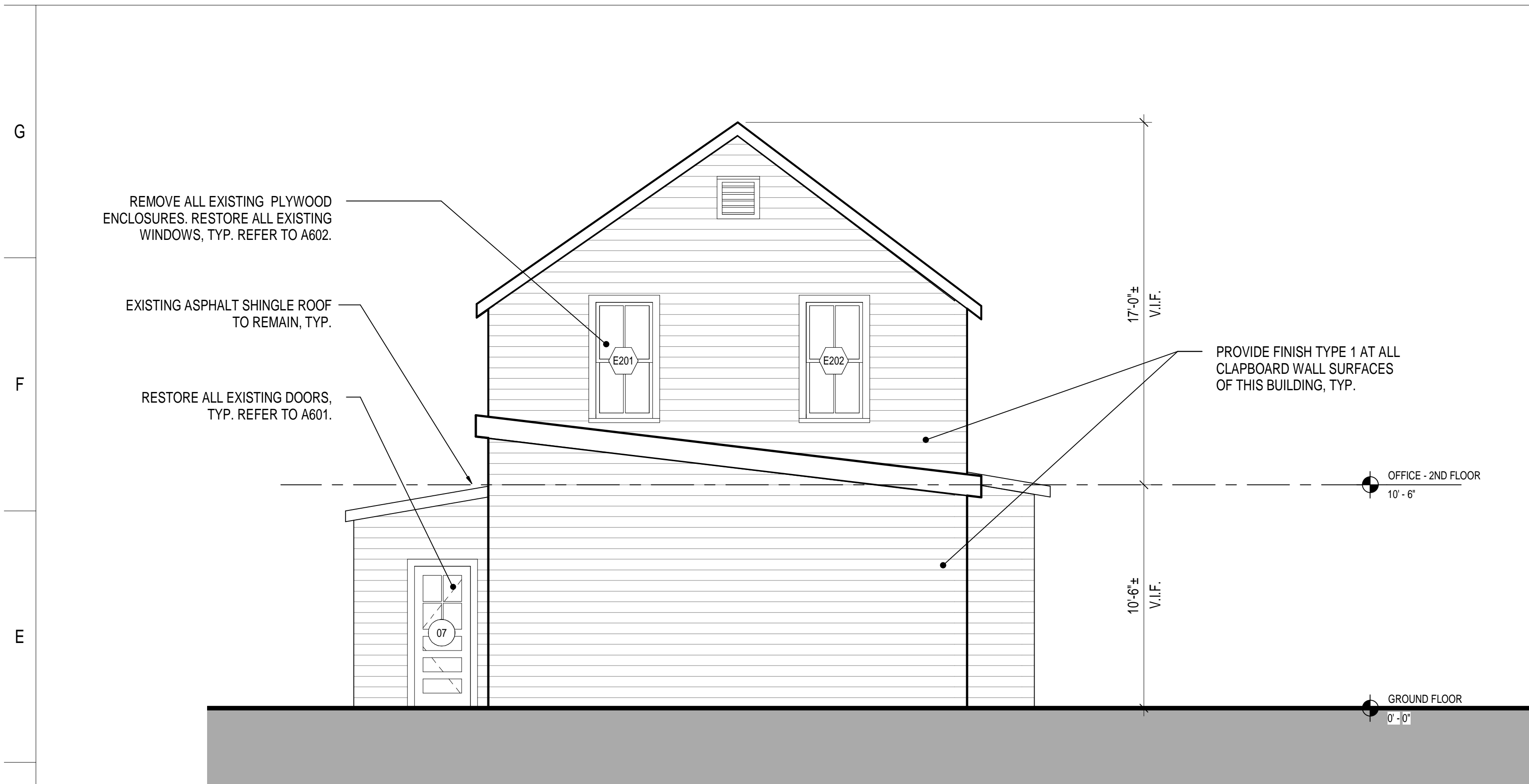
MATTON SHIPYARD PRE-DEVELOPMENT
ERIE CANALWAY HERITAGE FUND, INC
1 DELAWARE AVENUE, COHOES, NY 12047
OFFICE BUILDING ELEVATIONS

© COPYRIGHT 2021
LACEY THALER REILLY WILSON ARCHITECTURE & PRESERVATION, LLP
ALL RIGHTS RESERVED AND UNAUTHORIZED DUPLICATION IS A VIOLATION OF APPLICABLE LAWS.
REVISIONS

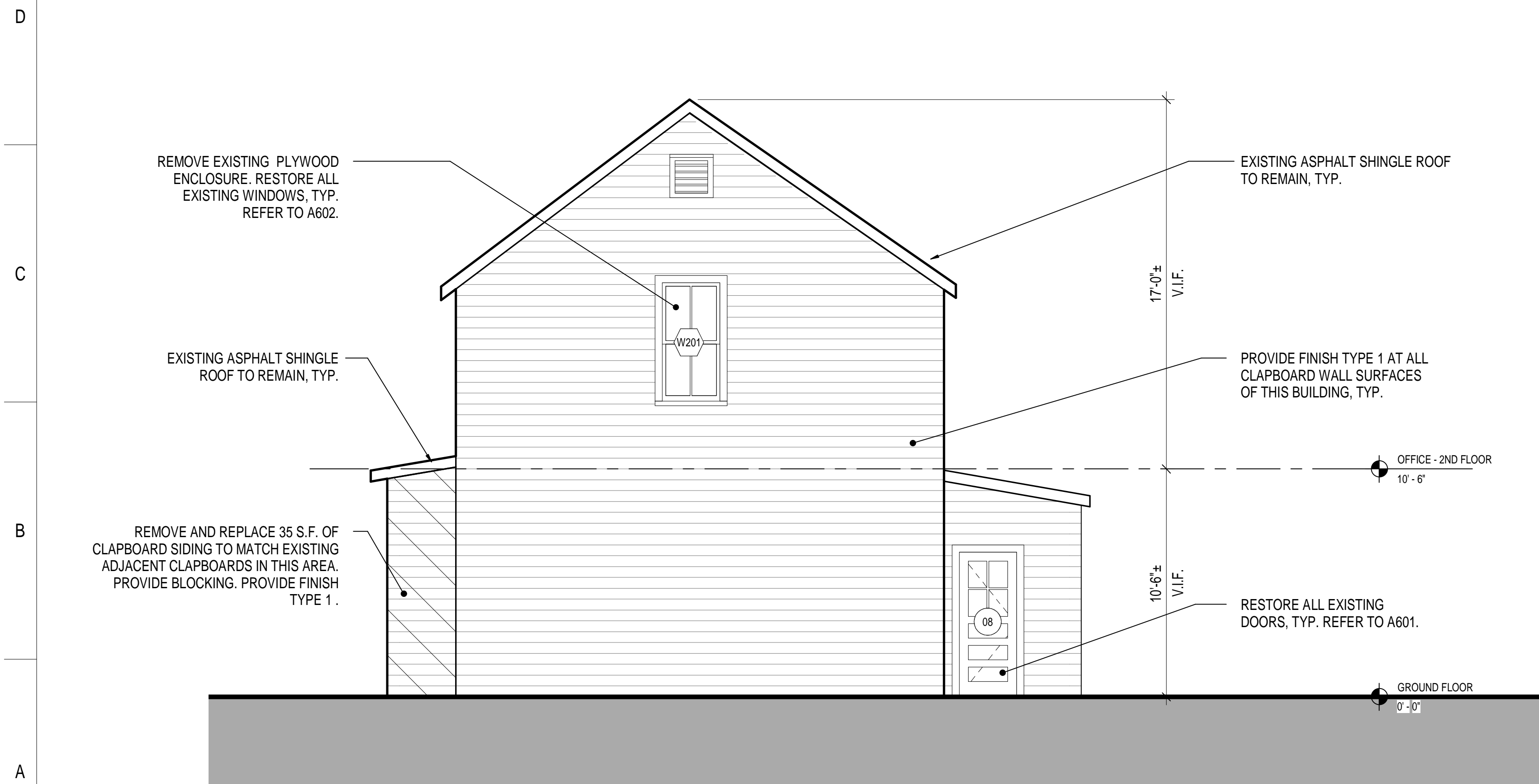
PROJECT NUMBER
20-012
DATE
JULY 16, 2021
DRAWN BY
AM

BID SUBMISSION
A201

7/16/2021 6:47:26 PM



D1 OFFICE BUILDING - EAST ELEVATION
A202 1/4" = 1'-0"



A1 OFFICE BUILDING - WEST ELEVATION
A202 1/4" = 1'-0"

NOT FOR CONSTRUCTION

For Estimating Purposes Only

CONSULTANT

MATTON SHIPYARD PRE-DEVELOPMENT
ERIE CANALWAY HERITAGE FUND, INC
1 DELAWARE AVENUE, COHOES, NY 12047
OFFICE BUILDING ELEVATIONS

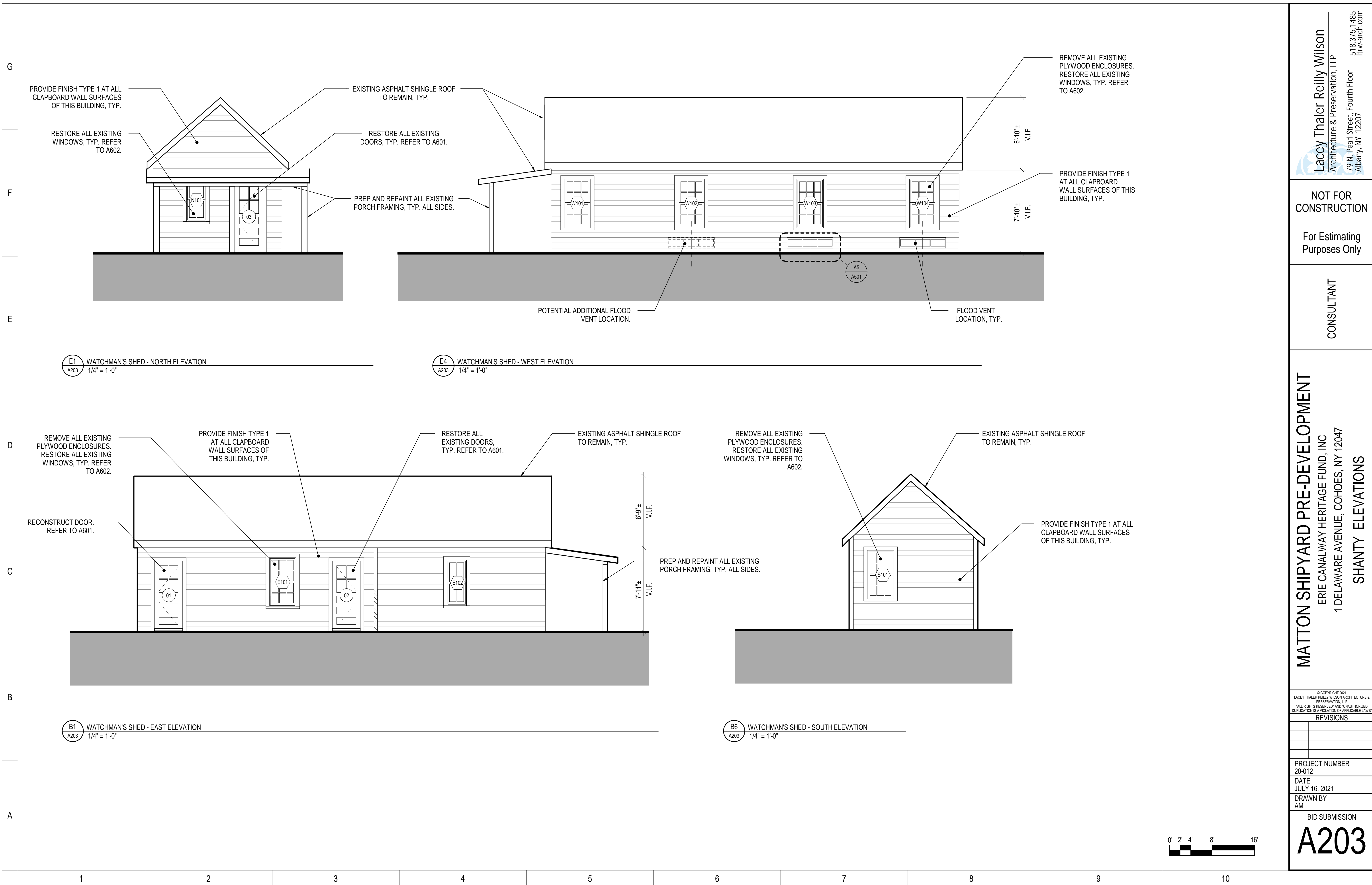
© COPYRIGHT 2021
LACEY THALER REILLY WILSON ARCHITECTURE & PRESERVATION, LLP
ALL RIGHTS RESERVED AND UNAUTHORIZED DUPLICATION IS A VIOLATION OF APPLICABLE LAW.

REVISIONS

PROJECT NUMBER
20-012
DATE
JULY 16, 2021
DRAWN BY
AM

BID SUBMISSION

A202



Lacey Thaler Reilly Wilson
Architecture & Preservation, LLP
79 N. Pearl Street, Fourth Floor
Albany, NY 12207
518.375.1485
ltrw-arch.com

NOT FOR CONSTRUCTION
For Estimating Purposes Only

CONSULTANT

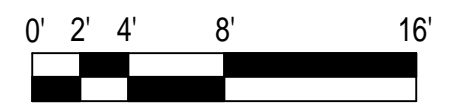
MATTON SHIPYARD PRE-DEVELOPMENT
ERIE CANALWAY HERITAGE FUND, INC
1 DELAWARE AVENUE, COHOES, NY 12047
SHANTY ELEVATIONS

© COPYRIGHT 2021
LACEY THALER REILLY WILSON ARCHITECTURE & PRESERVATION, LLP
"ALL RIGHTS RESERVED" AND "UNAUTHORIZED DUPLICATION IS A VIOLATION OF APPLICABLE LAW."

REVISIONS

PROJECT NUMBER
20-012
DATE
JULY 16, 2021
DRAWN BY
AM

BID SUBMISSION
A203



7/16/2021 6:47:27 PM